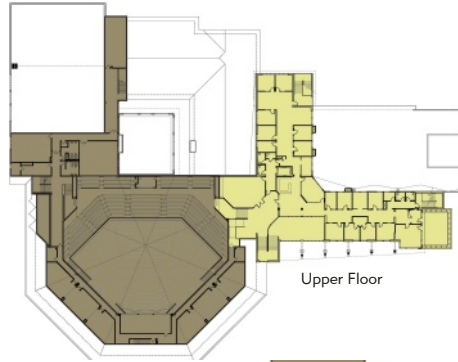
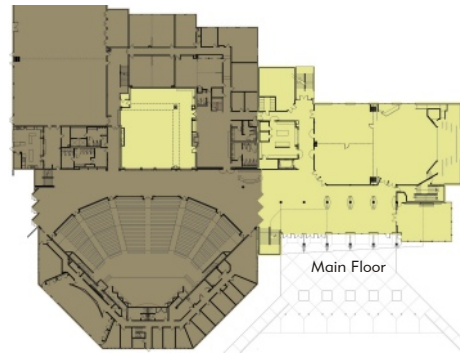


One of our first church projects was for Westminster Chapel over 25 years ago. Since that time, their ministry style has changed and it was now time to update the image and expand the facilities. The new building includes a 52,000 sq. ft. addition with a large banquet facility, youth spaces and office and foyer space. The foyer was also expanded into an atrium courtyard located at the center of the building.

On the lower level we added a 300-seat theatre space designed primarily for children. We also did the design for renovation of 42,000 sq. ft. of existing 99,000 SF building, including classrooms, sanctuary and sanctuary support spaces.



Interior View of Foyer



Exterior View

