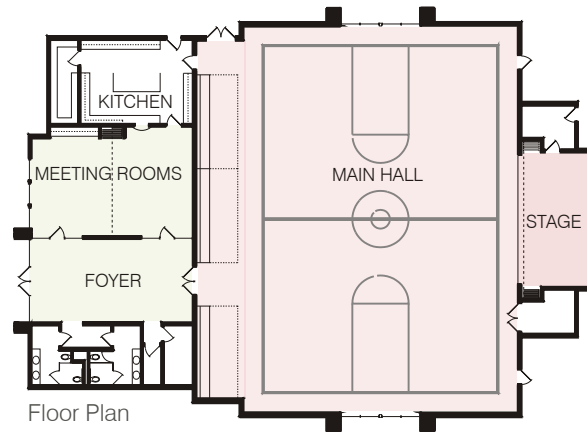




Exterior View



Floor Plan



Multi-Use Room Interior

A 9,000-square foot free-standing, multi-use facility with a fellowship hall / gymnasium, meeting room, large kitchen, stage, storage space and restrooms.

Parishioners had two distinct functions in mind for this new space: a gymnasium for the existing church school and a fellowship hall. Our goal was to make the space functional for basketball while being environmentally conducive to fellowship functions. To accomplish this, we used a combination of Zolatone wainscoting panels to "warm-up" the space, on a heavy-duty surface that would hold up under rugged use. A floating floor was used in the gym.

