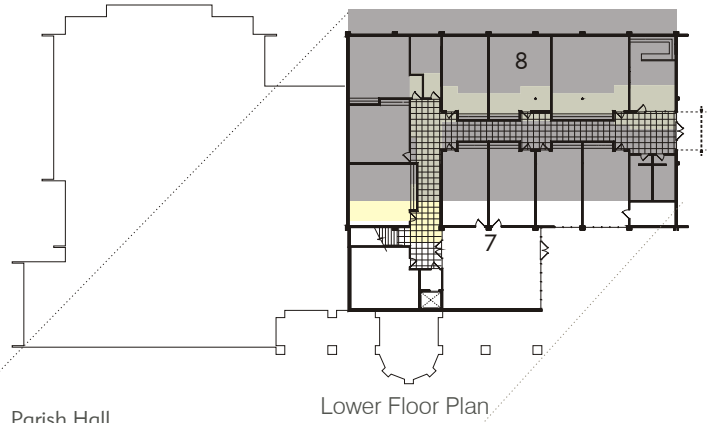




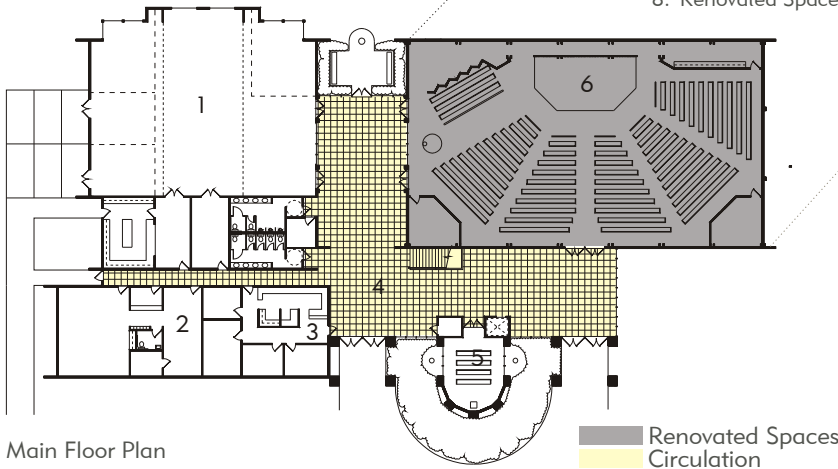
Parish Hall Interior



Addition Exterior



- 1. Parish Hall
- 2. Nursery
- 3. New Offices
- 4. New Gathering Space
- 5. New Chapel
- 6. Renovated Sanctuary
- 7. New Youth Room
- 8. Renovated Spaces



Main Floor Plan

St. Cecilia's needed additional Religious Education space. The parish offices and nurseries were moved from the lower floor to provide space for Religious Education expansion. These relocated spaces were placed on the main floor off the new gathering space. The new Parish Hall is used for Religious Education and other meetings by closing operable walls. Also added on the main floor were new restrooms, kitchen and a chapel. Master planning also included a future renovation/reorientation of the

