

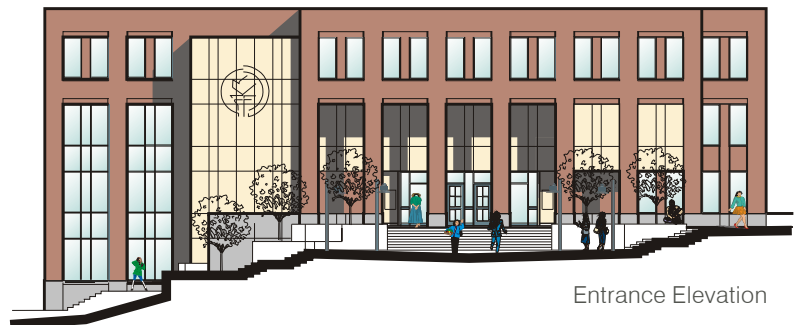


Exterior View @ Entry

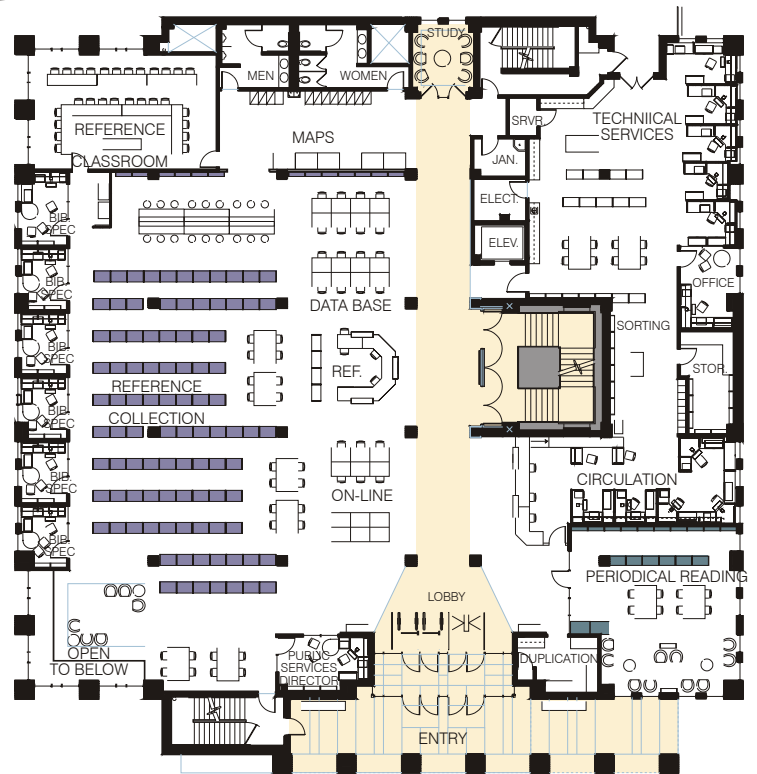


Interior View From Lobby

SPU's main campus library contains 60,000 square feet of floor area. We did the interior design for the building right down to the light fixtures to give a cohesive design statement. The floor-to-floor height was kept down to save cost, but we maintained the impression of height inside by limiting mechanical cross-over locations and using reflective flooring. The building was sited to connect the upper and lower campus functions, and the project also includes a new central plaza that serves as a focal point to the upper campus.



Entrance Elevation



Main Level Floor Plan