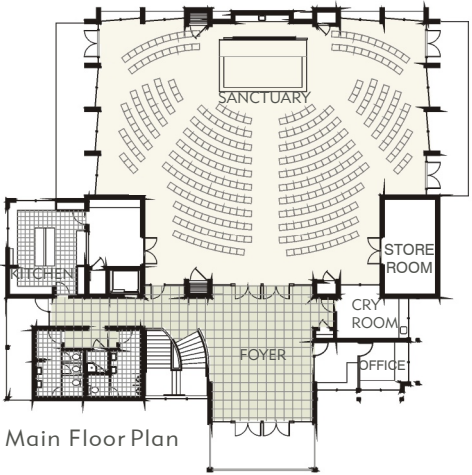




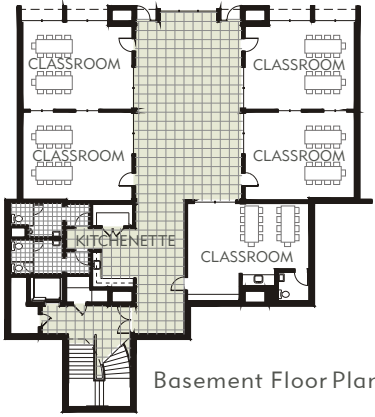
View From Main Approach



Main Floor Plan



Sanctuary/Fellowship Hall



Basement Floor Plan

Surrounded by forest and wetland, this multi-purpose sanctuary in the City of Sammamish accommodates weekly services, fellowship events and functions as a community reception hall.

As the congregation grows and more funds are available, the basement will be completed and furnished for Sunday school classes to be housed downstairs. Later additions will include an office suite, a fireside room and a nursery.

