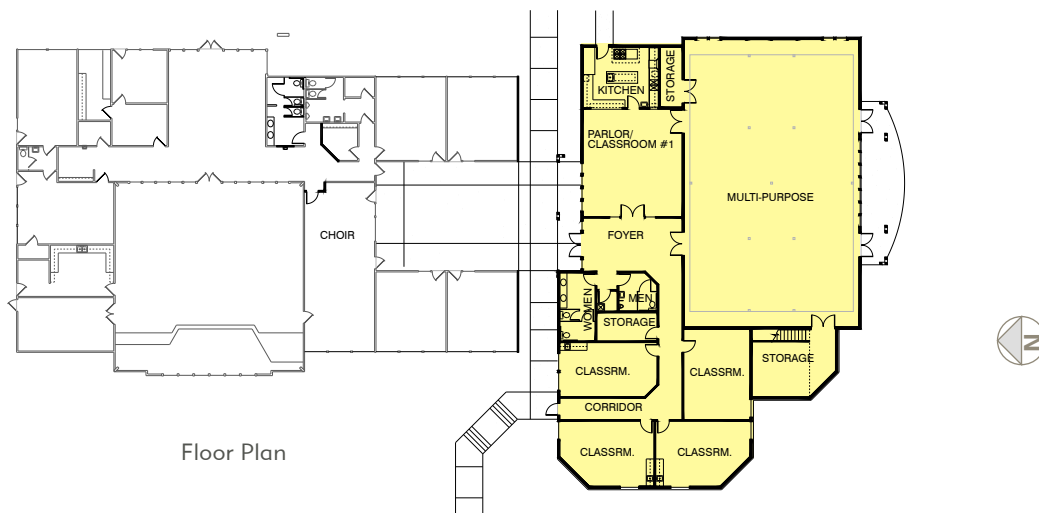




Exterior View from Parking Lot



Floor Plan

We designed a freestanding 7,800 square foot multi-purpose building, separate from the original building to avoid having to upgrade the existing building to current code. The project includes a gym/fellowship hall, classrooms, kitchen, restrooms, storage, and foyer. The new building ties in visually with the existing church by using similar roof pitch, clear story windows, and horizontal lines.



Exterior View of the Addition

