

This three-story office building in Everett, Washington contains 75,000 square feet of space. The building features a distinctive entry lobby on the North, street entry, and an entrance on the South end of the building.

The design created a variety of flexible floor plates, with a number of corner offices and two roof gardens.



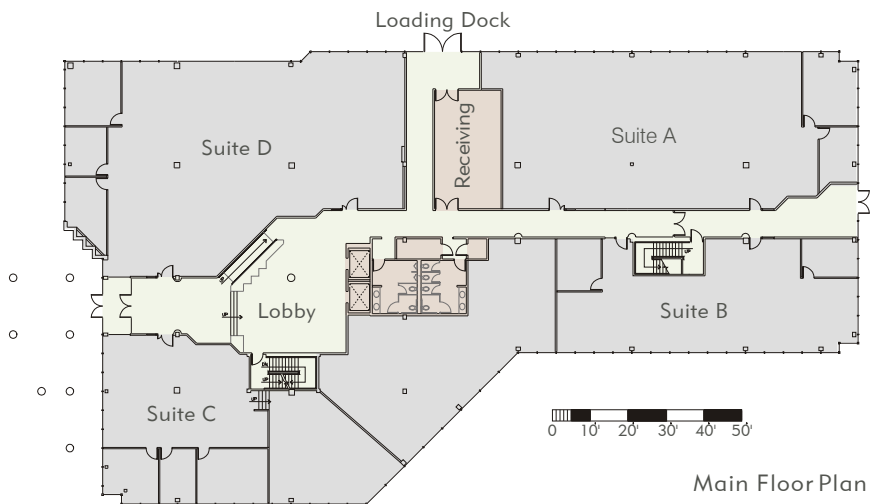
Exterior View of Main Entrance



Exterior View



Interior View Of Lobby



bpharchitects

Everett Mall Office Park II