



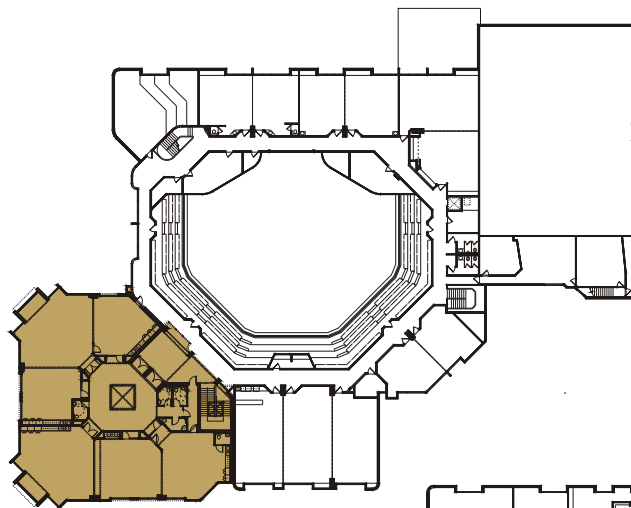
Exterior 3D Computer Rendering of Addition

A-2 story, 15,000 SF classroom addition, this project was designed to give a handsome appearance to a busy street corner while integrating with the existing architecture.

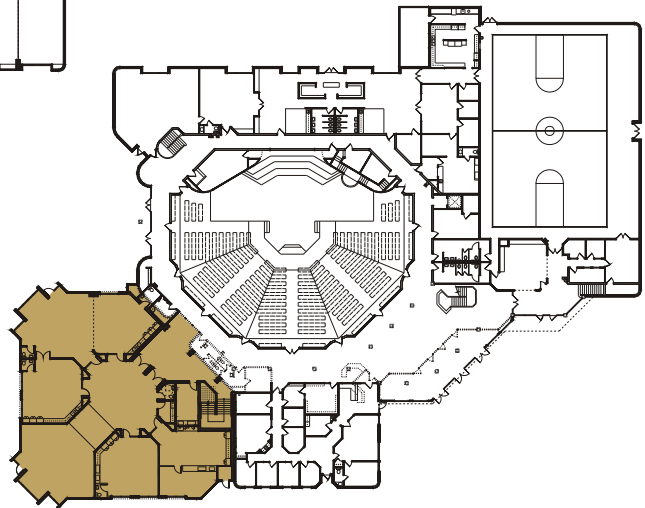
Classrooms for young children are on the main floor and elementary age kids are on the upper floor. The interior design of the classroom areas has a unique age-appropriate kid-friendly look and feel.



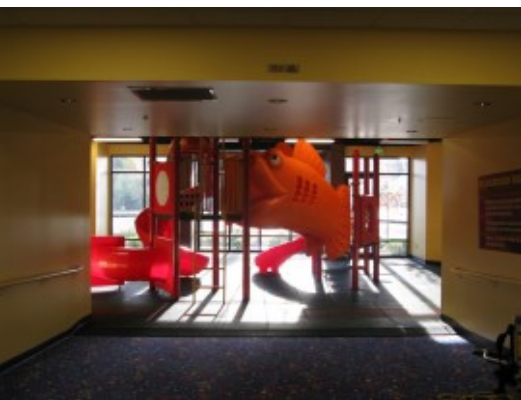
Interior at Elementary



Upper Floor Plan



Main Floor Plan



Interior at Preschool

